

## Superior scan speed with reliable performance for high volume printing

The imageRUNNER ADVANCE DX 6700i series fulfills demanding office requirements with high volume printing capability. With as high speed scanning and various security features, the series will be a valuable asset to digitally transform the office environment.



### WORKFLOW EFFICIENCY

- Intuitive touchscreen provides users with smartphone-like usability, making navigation a breeze.
- Industry leading Single-Pass document feeder allows up to 270 ipm scanning, supports paper skew prevention and comes with advanced anti-dust/streak measures.
- Canon's MEAP platform provides process optimisation, by integrating with a range of powerful document, capture and output management solutions.
- Scalable support for mobile where users can connect directly to the device with Direct Access Point. Capture, scan or print documents easily with the Canon Print Business app.
- Supports scanning and converting documents to Searchable PDF, Microsoft® Word, and Microsoft® PowerPoint files.
- Intelligent features, such as motion sensor technology to wake the device from sleep mode and the ability to remove blank pages when scanning, help maximise productivity.

### COST MANAGEMENT

- The ability to apply print policies, monitor output, and restrict usage by user helps reduce unnecessary printing, resulting in lower total document cost.
- Seamless integration with output management solutions, such as uniFLOW or uniFLOW Online Express for detailed tracking, reporting, and cost analysis.
- Quality and reliability, combined with remote diagnostics and assistance, can help reduce costs by minimising downtime and time spent by IT.
- Consistent user operation combined with remote and centralised fleet management can help simplify IT management of devices and entire fleets.

## QUALITY AND RELIABILITY

- Canon's signature reliability and engine technologies provide high quality output to meet the needs of busy departments.
- State-of-the-art imaging technologies and toner allow for consistently striking images in rich black-and-white tones.
- Designed to achieve maximum uptime with status notifications to help keep supplies replenished, intuitive user walkthrough videos guide users to replace toner on the fly.
- Ease administrative burdens and increase uptime with eMaintenance. Automate your fleet maintenance task, improve consumables management and gain better control of networked devices.
- Standard PCL support integration with enterprise applications and legacy systems to help streamline business processes.

## SUSTAINABILITY

- Fusing technologies and innovative sleep mode features help lower overall energy consumption.
- Minimise paper wastage by holding jobs at the device with Force Hold Print. Choose to preview your print jobs or even change print settings at the device to achieve the desired results at the first time of printing.

## SECURITY

- Control who has access to the device with different authentication methods such as picture login, department ID, user authentication, and card access.
- Ensure information privacy and security across your network with IPsec, port filtering capabilities, and SSL technology.
- System verification at startup and McAfee® Embedded Control ensures device security, protecting against malware and tampering of firmware.
- Integrate with third-party solutions for complete monitoring protection.

# MACHINE SPECIFICATION

## MAIN UNIT

### Machine Type

A3 Monochrome Laser Multifunctional

### Core Functions

Print, Copy, Scan, Send, Store and Optional Fax

### Processor

Canon Dual Custom Processor (Shared)

### Control Panel

Standard\*: 10.1" TFT LCD WSVGA Colour Touchpanel  
Optional: 10.4" TFT LCD SVGA Colour Upright Touchpanel

### Memory

Standard: 3.0GB RAM

### Hard Disk Drive

Standard\*: 320GB (Available Disk Space: 250GB)  
Optional: 250GB, 1TB

\*A different initial HDD may be used.

Mirroring Hard Disk Drive Optional

### Interface Connection

#### Network

Standard: 1000Base-T/100Base-TX/10Base-T,  
Wireless LAN (IEEE 802.11 b/g/n)

Optional: NFC, Bluetooth Low Energy

#### Others

Standard: USB 2.0 x1 (Host), USB 3.0 x1 (Host),  
USB 2.0 x1 (Device)

Optional: Serial Interface, Copy Control Interface

### Paper Supply Capacity (A4, 80gsm)

Standard: 4,200 sheets  
100-sheet Multi-purpose tray x1  
1,500-sheet Paper Deck x2  
550-sheet Paper Cassette x2  
Maximum: 7,700 sheets (with Paper Deck Unit-E1 or  
POD Deck Lite-C1)

### Paper Output (A4, 80gsm)

250 Sheets (with Copy Tray-R2)  
Maximum: 3,500 Sheets (with Staple Finisher-AC1 or  
Booklet Finisher-AC1)

### Finishing Capabilities

With options: Collate, Group, Offset, Staple, Saddle  
Stitch, Hole Punch, ECO-Staple, Staple-On-Demand,  
Document Insertion, Z-fold, C-fold

### Supported Media Types

#### Multi-purpose Tray:

Thin, Plain, Recycled, Color, Heavy, Tracing, Bond,  
Transparency, Label, Pre-punched, Letterhead, Tab

#### Upper Left/Right Cassettes (1/2):

Thin, Plain, Recycled, Color, Heavy, Bond, Pre-punched,  
Letterhead

#### Lower Cassettes (3/4):

Thin, Plain, Recycled, Color, Heavy, Bond, Pre-punched,  
Letterhead, Tab\*

\*Requires Tab Feeding Attachment-B1.

### Supported Media Sizes

#### Multi-purpose Tray:

Standard size: A3, A4, A4R, A5\*, A5R, A6R\*<sup>2</sup>, B4, B5, B5R  
Custom Size: 100.0 x 148.0 mm to 297.0 x 487.7 mm  
Free size: 100.0 x 148.0 mm to 297.0 x 487.7 mm

#### Upper Left/Right Cassettes (1/2):

Standard size: A4, B5

#### Lower Cassettes (3/4):

Standard size: A3, A4, A4R, A5R, B4, B5, B5R  
Custom size: 139.7 x 182.0 mm to 297.0 x 487.7 mm

\*1 Supported media weights: more than 64 gsm

\*2 Supported media weights: more than 91 gsm

### Supported Media Weights

Multi-purpose tray : 52 to 256 gsm  
Upper Left/Right Cassettes (1/2) : 52 to 220 gsm  
Lower Cassettes (3/4) : 52 to 220 gsm  
Duplex : 52 to 220 gsm

### Warm-up Time

Quick Startup Mode: 4 Seconds or Less\*<sup>1</sup>  
From Sleep Mode: 30 Seconds or Less  
From Power On: 30 Seconds or Less\*<sup>2</sup>

\*<sup>1</sup> Time from device power on to when the copy icon appears and is  
enabled to operate on the touch panel display

\*<sup>2</sup> Time from device power-on, until copy ready(not print reservation)

### Dimensions (W x D x H)

Standard: 670 mm x 770 mm x 1,185 mm  
With optional Upright Control Panel: 1,170 x 770 x 1,252 mm

### Installation Space (W x D)

Basic: 1,533 x 1,353 mm (with Multi-purpose tray/upper-  
right cover open + Front cover open + Copy Tray)  
Fully configured: 2,436 x 1,353 mm (with POD Deck  
Lite-C1 + Document Insertion/Folding Unit-J1 + Booklet  
Finisher-AC1/Staple Finisher-AC1 + Main unit Front cover  
open)

### Weight

IR-ADV DX 6780i/6765i/6755i: Approx. 219 kg\*<sup>1</sup>  
Approx. 223 kg\*<sup>2</sup>

\*<sup>1</sup> Including AUI, Flat Touch Panel and the toner bottle.

\*<sup>2</sup> Including ADF, optional Upright touch panel and the toner bottle.

## Printing Specifications

### Print Speed

IR-ADV DX 6780i: Up to 80 ppm (A4), Up to 40 ppm (A3),  
Up to 58 ppm (A4R), Up to 35 ppm (A5R)

IR-ADV DX 6765i: Up to 65ppm (A4), Up to 32ppm (A3),  
Up to 47ppm (A4R), Up to 35 ppm (A5R)

IR-ADV DX 6755i: Up to 55ppm (A4), Up to 32ppm (A3),  
Up to 40ppm (A4R), Up to 35 ppm (A5R)

### Print Resolution (dpi)

1,200 x 1,200

### Page description languages

Standard: UFR II, PCL 6  
Optional: Adobe® PostScript® 3\*<sup>TM</sup>

### Direct Print

Supported file types: PDF, EPS, TIFF/JPEG, and XPS

### Printing from mobile and cloud

AirPrint, Mopria, Google Cloud Print, Canon Print  
Business, and uniFLOW Online

### Fonts

PS fonts: 136 Roman  
PCL fonts: 93 Roman, 10 Bitmap fonts, 2 OCR fonts,  
Aridulë Mono WT J/K/S/T\*<sup>1</sup> (Japanese, Korean,  
Simplified and Traditional Chinese),  
Barcode fonts\*<sup>2</sup>

\*<sup>1</sup> Requires optional PCL INTERNATIONAL FONT SET-A1

\*<sup>2</sup> Requires optional BARCODE PRINTING KIT-D1

### Operating System

UFR II: Windows® 7/8.1/10/Server 2008/Server 2008 R2/Server  
2012/Server 2012 R2/Server 2016/Server 2019, MAC OS X  
(10.10 or later)

PCL: Windows® 7/8.1/10/Server 2008/Server 2008 R2/Server  
2012/Server 2012 R2/Server 2016/Server 2019

PS: Windows® 7/8.1/10/Server 2008/Server 2008 R2/Server  
2012/Server 2012 R2/Server 2016/Server 2019, MAC OS X  
(10.10 or later)

PPD: Windows® 7/8.1/10, MAC OS X (10.9 or later)

## Copy Specifications

### Copy Speed

IR-ADV DX 6780i: Up to 80 ppm (A4), Up to 40 ppm (A3),  
Up to 58 ppm (A4R), Up to 35 ppm (A5R)

IR-ADV DX 6765i: Up to 65ppm (A4), Up to 32ppm (A3),  
Up to 47ppm (A4R), Up to 35 ppm (A5R)

IR-ADV DX 6755i: Up to 55ppm (A4), Up to 32ppm (A3),  
Up to 40ppm (A4R), Up to 35 ppm (A5R)

### First-Copy-Out Time (A4)

IR-ADV DX 6780i: Approx. 3.1 seconds or less  
IR-ADV DX 6765i: Approx. 3.3 seconds or less  
IR-ADV DX 6755i: Approx. 3.3 seconds or less

### Copy Resolution (dpi)

600 x 600

### Multiple Copies

Up to 9,999 copies

### Copy Density

Automatic or Manual (9 Levels)

### Magnification

Variable zoom: 25% - 400% (1% Increments)

Preset reduction/enlargement: 25%, 50%, 61%, 70%, 81%,  
86%, 100% (1:1), 115%, 122%, 141%, 200%, 400%

## Scan Specifications

### Type

Single-pass Duplexing Automatic Document Feeder  
[2-sided to 2-sided (Automatic)]

\* Detect Feeder Multi Sheet Feed is supported.

### Document Feeder Paper Capacity (80gsm)

up to 200 sheets

### Acceptable Originals and Weights

Platen: Sheet, Book, and 3-Dimensional objects

Document Feeder media weight (BW/CL):

1-sided scanning: 38 to 220 gsm

2-sided scanning: 38 to 220 gsm

\*An acceptable weights of A6R or smaller is 50 to 220gsm.

#### Supported Media Sizes

Platen: max. scanning size: up to 297.0 x 431.8 mm

Document Feeder media size:

A3, A4, A4R, A5, A5R, A6R, B4, B5, B5R, B6R,  
Custom size: 70.0 x 139.7 mm to 304.8 x 431.8 mm

#### Scan Speed (ipm: BW/CL; A4)

1-sided Scanning : 135/135 (300 x 300 dpi, send),  
80/80 (600 x 600 dpi, copy)  
2-sided Scanning : 270/270 (300 x 300 dpi, send),  
160/90 (600 x 600 dpi, copy)

#### Scan Resolution (dpi)

Scan for Copy : 600 x 600

Scan for Send : (Push) 600 x 600 (SMB/FTP/WebDAV/  
iFAX), (Pull) 600 x 600

Scan for Fax : 600 x 600

#### Pull Scan Spec

Colour Network ScanGear2. For both TWAIN and WIA

Supported OS: Windows® 7/8.1/10/Server 2008/Server 2008  
R2/Server 2012/Server 2012 R2/Server 2016

## Send Specifications

#### Destination

Standard: E-mail/Internet FAX (SMTP), SMB3.0, FTP, WebDAV,  
Mail Box  
Optional: Super G3 FAX, IP Fax

#### Address Book

LDAP (2,000)/Local (1,600)/One-touch (200)

#### Send Resolution (dpi)

Push : up to 600 x 600

Pull : up to 600 x 600

#### Communication Protocol

File : FTP (TCP/IP), SMB3.0 (TCP/IP), WebDAV

E-mail/i-Fax : SMTP, POP3

#### File Format

Standard : TIFF, JPEG, PDF(Compact, Searchable,  
Apply policy, Optimize for Web, PDF/A-1b,  
Trace & Smooth, Encrypted, Device Signature,  
User Signature), XPS(Compact, Searchable,  
Device Signature, User Signature), Office Open  
XML (PowerPoint, Word)

## Fax Specifications

Maximum Number of Connection Lines 4

Modem Speed Super G3 : 33.6 kbps  
G3 : 14.4 kbps

Compression Method MH, MR, MMR, JBIG

Resolution (dpi): 400x400 (Ultra Fine),  
200x400 (Super Fine),  
200x200 (Fine),  
200x100 (Normal)

#### Sending/Receiving Size

Sending : A3, A4, A4R, A5<sup>\*1</sup>, A5R<sup>\*1</sup>, B4, B5<sup>\*2</sup>, B5R<sup>\*1</sup>

Receiving : A3, A4, A4R, A5R, B4, B5, B5R

<sup>\*1</sup> Sent as A4 <sup>\*2</sup> Sent as B4 short

FAX Memory Up to 30,000 pages (2,000 jobs)

Speed Dials Max. 200

Group Dials/Destinations Max. 199 dials

Sequential Broadcast Max. 256 addresses

Memory Backup Yes

## Store Specifications

Mail Box (Number supported)

100 User Inboxes, 1 Memory RX Inbox,

50 Confidential Fax Inboxes

Maximum 30,000 Pages (2,000 jobs) Stored

#### Advanced Box

Communication Protocol: SMB or WebDAV

Supported Client PC: Windows (Windows® 8.1/10)

Concurrent Connections (Max.): SMB: 64, WebDAV: 3

#### Advanced Box available disc space

Approx. 16GB (Standard HDD)

Approx. 480GB (with option 1TB HDD)

## Security Specifications

#### Authentication

Standard : User Authentication (Picture Login, Picture and  
PIN Login, Card Login, Username and Password Login,  
Function Level Login, Mobile Login), Department ID  
Authentication (Department ID and PIN Login, Function  
Level Login), uniFLOW Online Express (PIN Login, Picture  
Login, Picture and PIN Login, Card Login, Card and PIN Login,  
Username and Password Login, Department ID and PIN  
Login, Function Level Login), Access Management System  
(Access Control)

#### Document Security

**Print Security** (Secure Print, Encrypted Secure Print, Forced  
Hold Printing, uniFLOW Secure Print<sup>†1</sup>)

**Receive Data Security** (Confidential Fax Inbox Forwarding  
Received Documents Automatically)

**Scan Security** (Encrypted PDF, Device Signature PDF/  
XPS, User Signature PDF/XPS, Adobe LiveCycle® Rights  
Management ES2.5 Integration), BOX Security (Mail Box  
Password Protected, Advanced Box Access Control)

**Send Data Security** (Setting for requesting password  
input per transmission, Restricted E-mail/File send  
functions, Confirming FAX number, Allow/Restrict Fax Driver  
Transmissions, Allow/Restrict Sending from History, S/MIME  
Support), Document Tracking (Secure Watermark)

<sup>†1</sup> Requires uniFLOW Online/uniFLOW

#### Network Security

TLS 1.3, IPsec, IEEE802.1X authentication, SNMP V3.0, Firewall  
Functionality (IP/MAC Address Filtering), Dual Network  
Support (Wired LAN/Wireless LAN, Wired LAN/Wired LAN),  
Disabling Unused Functions (Enabling/Disabling Protocols/  
Applications, Enabling/Disabling Remote UI, Enabling/  
Disabling USB Interface)

#### Device Security

Protecting HDD Data (HDD Data Encryption (FIPS140-  
2 Validated), HDD Data Overwrite Erase, HDD Lock),  
Standard HDD Initialize, Trusted Platform Module (TPM), Job  
Log Conceal Function, Protecting MFD Software Integrity,  
Checking MFD Software Integrity (Verify System at Startup,  
Runtime Intrusion Detection),  
Optional: IEEE2600.2 (Common Criteria Certification)  
(available at a later schedule)

#### Device Management and Auditing

Administrator Password, Digital Certificate And Key  
Management, Audit Log, Cooperating with External Security  
Audit System (Security Information and Event Management),  
Image Data Logging, Security Policy Setting

## Environment Specifications

#### Operating Environment

Temperature: 10 to 30 °C

Humidity: 20 to 80 % RH (Relative Humidity)

Power Source 220-240V, 50-60Hz, 10A

#### Power Consumption

Maximum: 2,400W

Standby: Approx. 256 W<sup>\*1</sup>

Sleep mode: Approx. 0.9 W<sup>\*2</sup>

<sup>\*1</sup> Reference Value

<sup>\*2</sup> 0.9W sleep mode is not available in all circumstances due to certain  
settings.

## Consumables

Toner Cartridge NPG-54 Black Toner

Toner Yield (Estimated Yield @6% Coverage): 56,000 pages

## Software and Printer Management

#### Tracking and reporting

Universal Login Manager (ULM)

uniFLOW Online Express

#### Remote Management Tools

iW Management Console

eMaintenance

Content Delivery System

#### Scanning Software

Network ScanGear

#### Optimisation Tools

Canon Driver Configuration Tool

NetSpot Device Installer

#### Platform

MEAP (Multifunctional Embedded Application Platform)

#### Document Publishing

IW DESKTOP

## Paper Supply Options

#### PAPER DECK UNIT-E1

Paper Capacity : 3,500 Sheets (80gsm)

Paper Type : Thin, Plain, Recycled, Color, Heavy, Bond,  
Pre-punched, Letterhead

Paper Size : A4, B5

Paper Weight : 52 to 256 gsm

Power Source : From the Main Unit

Dimensions (WxDxH) : 340 x 630 x 572 mm  
(attached to the main unit)

Weight : Approx. 34 kg

#### POD DECK LITE-C1

Paper Capacity : 3,500 sheets (80 gsm)

Paper Type : Thin, Plain, Recycled, Color, Heavy,  
Tracing, Bond, Transparency, Label,  
Pre-punched, Letterhead, Tab

Paper Size : A3, A4, A4R, A5R, B4, B5, B5R  
Custom size : 139.7 x 182.0 mm to 297.0 to 487.7 mm

Paper Weight : 52 to 256 gsm

Power Source : 220-240V, 50/60Hz, 1.2A

Dimensions (WxDxH) : 633 x 686 x 574 mm

(attached to the main unit)

Weight : Approx. 68 kg

## Hardware Accessories

#### Card Readers

COPY CARD READER-F1

COPY CARD READER ATTACHMENT-A4

#### Others

UPRIGHT CONTROL PANEL-J1

UTILITY TRAY-B1

TAB FEEDING ATTACHMENT KIT-B1

SHIFT TRAY-F1

NUMERIC KEYPAD-A1

FINISHER JOGGER KIT-A1

PRINTER COVER-H2

## Security Options

#### Device Security

IR-ADV SECURITY KIT-AJ1 FOR IEEE 2600 COMMON CRITERIA  
CERTIFICATION

(available at a later schedule)

#### Data Security

2.5INCH/250GB HDD-N1

2.5INCH/1TB HDD-P1

HDD MIRRORING KIT-J1

## System and Controller Options

#### Print Accessories

PCL INTERNATIONAL FONT SET-A1

PCL ASIAN FONT SET-A1

PS PRINTER KIT-BC1/CH1

#### Barcode Printing

BARCODE PRINTING KIT-D1

#### EFI-Fiery Based Controller

ImagePASS-Y3 V1.1

#### EFI-Fiery Based Controller Options

FIERY IMPOSE

FIERY COMPOSE

FIERY IMPOSE AND COMPOSE

FIERY IMAGEVIEWER

REMOVABLE HDD KIT-B6

#### System Accessories

SERIAL INTERFACE KIT-K3

NFC KIT-E1

COPY CONTROL INTERFACE KIT-A1

CONNECTION KIT-A2 FOR BLUETOOTH LE

#### Fax Accessories

SUPER G3 FAX BOARD-AS1

SUPER G3 2ND LINE FAX BOARD-AS1

SUPER G3 3RD/4TH LINE FAX BOARD-AS1

REMOTE FAX KIT-A1

IP FAX EXPANSION KIT-B1

## Other Options

#### Accessibility Accessories

ADF ACCESS HANDLE-A1

VOICE GUIDANCE KIT-G1

VOICE OPERATION KIT-D1

#### Staple Cartridge

STAPLE-CARTRIDGE-X1

STAPLE CARTRIDGE-Y1

For full specifications, please refer to the  
specification table on your local Canon web site.



## MAIN CONFIGURATION OPTIONS



### STAPLE FINISHER-AC1

- 3-tray, 3,500-sheet capacity
- Corner and double stapling up to 65 sheets
- Supports ECO-Staple and Staple-on-Demand
- Supports optional external 2/3 hole puncher (2/3H Puncher Unit-A1) or 2/4 hole puncher (2/4H Puncher Unit-A1)



### BOOKLET FINISHER-AC1

- 3-tray, 3,500-sheet capacity
- Corner and double stapling up to 65 sheets
- Booklet-making up to 20 sheets and saddle-folding up to 3 sheets
- Supports ECO-Staple and Staple-on-Demand
- Supports optional external 2/3 hole puncher (2/3H Puncher Unit-A1) or 2/4 hole puncher (2/4H Puncher Unit-A1)



### DOCUMENT INSERTION/ FOLDING UNIT-J1

- Insert pre-printed sheets
- Up to A3
- 1-tray, 100-sheet capacity
- Z-fold, C-fold

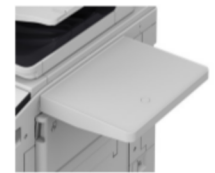


### DOCUMENT INSERTION UNIT-P1

- Insert pre-printed sheets
- Up to A3
- 1-tray, 100-sheet capacity



### UPRIGHT CONTROL PANEL-J1



### UTILITY TRAY-B1



### COPY TRAY-R2



### SHIFT TRAY-F1



### PAPER DECK UNIT-E1

- 3,500-sheet capacity
- Supports A4



### POD DECK LITE-C1

- 3,500-sheet capacity
- 52 to 256 gsm
- Supports up to A3
- User adjustable



### imagePASS-Y3 V1.1 (Server)

Delivers fast processing speed, outstanding image quality, and time-saving workflow

For more information, please refer to EFI brochure



Partner/ Dealer Stamp

To arrange for a demonstration, simply contact any of our offices below.

**SOUTH & SOUTHEAST ASIA  
REGIONAL HEADQUARTERS**

Canon Singapore Pte. Ltd. | 1 Fusionopolis Place #15-01 Galaxis Singapore 138522  
Tel: 65-6799 8888 | Fax: 65-6799-8882 | [www.canon-asia.com](http://www.canon-asia.com) | [www.canon.com.sg](http://www.canon.com.sg)

This document is for general information only and contents are subject to change without notice. Errors and omissions excepted. Weights and dimensions are approximates. Options, name and availability may vary by regions. Nothing in this document should be construed as a warranty. We expressly disclaim any liability or contractual obligations in connection with this document. Trademarks belong to their respective owners.

All company and/or product names are trademarks and/or registered trademarks of their respective manufacturers in their markets and/or countries. Canon, imageRUNNER, imageRUNNER ADVANCE, imageCHIP, RAPID Fusing System, MEAP, eMaintenance, iW, Business can be simple and get Smart get genuine are trademarks of Canon Inc. and/or its affiliates. "MEAP" is a trademark of CANON Inc., referring to an "application platform" for Canon multifunction and single function printers. Other names may be the trademarks of their respective owners.

uniFLOW, eCopy and Therefore are independent party software distributed by Canon Singapore Pte Ltd.

0220W363 © 2020 Canon Singapore Pte. Ltd.  
All rights reserved. Printed in Singapore.